

MPIS - 3002

Multi Purpose Imaging System



EPCC / PRODUCTS / APPLICATION / SOFTWARE / ACCESSORIES / CONSUMABLES / SERVICES

Analytical Technologies Limited

An ISO 9001 Certified Company

www.analyticalgroup.net



▶▶ **ALL IN ONE SYSTEM**

Software-controlled multi-purpose imaging system for versatile applications



▶▶ **SAMPLE TRAY AUTOMATIC IDENTIFICATION**

Detect Sample Tray automatically with preset protocols provide the best image capture condition



▶▶ **SUPERIOR SENSITIVITY**

Reduce the waiting time for your faint signal to appear



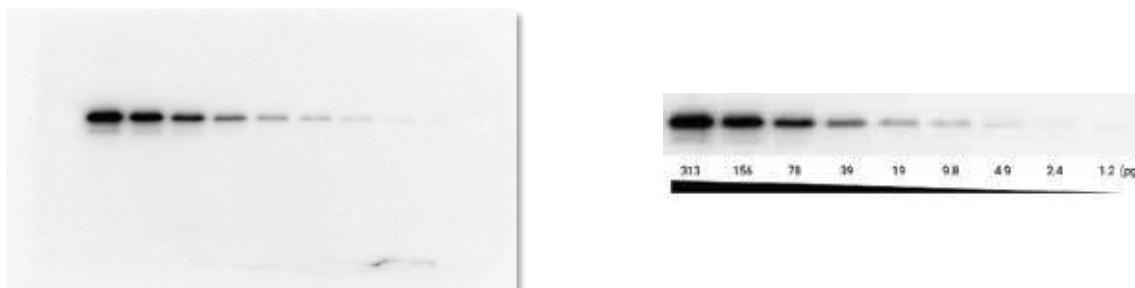
▶▶ **EASY IMAGE EXPORT**

Export your images in a batch to your USB drive instantly

ATL is a high-end multi-purpose research grade imaging system, ideal for molecular biology core facility. It consists of a superior 16 bit, 9.1 megapixel Peltier cooled camera element, software-controlled lens, eightposition motorized filter wheel come with a high transparent amber filter. Large visual area, MPIS 3002 LED light set covers the wavelength range from visible to NIR as Epi-light source, low background 302nm/365nm dual wavelength UV transilluminator. Inbuilt 24V power supply for blue/white light sample tray, UV radiation safety interlock darkroom, 67mm WK 201 ~ WK 205 filter emission filter as standard, energy saving mode provides camera turn off automatically while idling over than 15 minutes. Pre-set optimum condition, method create and edit capability.

ATL inbuilt with SBC and 12" touch panel LCD, exactly the smart software-controlled imaging system. It's not only available for traditional gel documentation but also equipped with Stain-Free gel UV activation capability. The high S/N of 9.1 megapixel large chip size, Peltier cooled camera with temperature down to 40°C below ambient makes MLX the most sensitive and high resolution system in the market.

Code recognizer enables MLX automatically recognize sample tray to drive the system with the specific emission filter, excitation light source, zoom, iris, focus and all preset parameter to get the best image by one click. The system also supports method create and recall for multiple users.



Two-fold dilution series of purified human transferrin

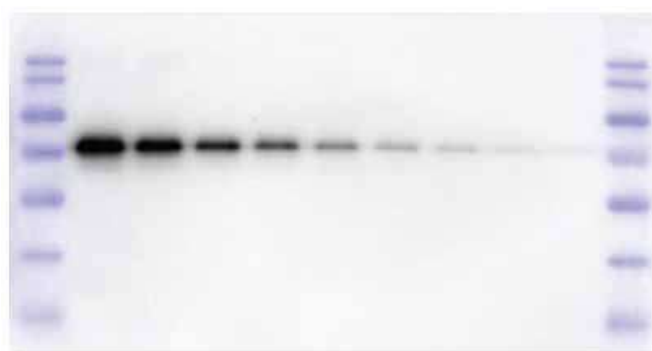


Image blending with the marker image with Auto Coloring

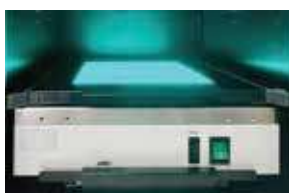
MPIS 3002 is the new LED Epi light source module for fluorescence western blot workflow. It covers wavelength from visible range 460nm to NIR 780nm, coupled with narrow band emission filter delivering excellent result with all kinds of commercial fluorescent dyes.

Magic Chemi Plus software package is dedicated for ATL which integrated with both Magic 1D and Magic Chemi software.

Magic 1D software package with genius capture mode CGM allows user to preset, save and recall capture parameter by one click. Maximum 30 seconds exposure time is available for single capture. The GCM function helps operator to get excellent image anytime.

Built-in darkroom calibration, camera shading correction, distortion correction, flat frame correction, adjustable brightness / contrast /, image profiling / blending, background defining, provides whole visual area imaging at the same level. In addition, four analysis functions, molecular weight and mass determination, colony counting, microtiter plate assay, and spot density calculation are also included.

Magic Chemi software package dedicated for chemiluminescent signal capture, functions include live / preview viewing, auto capture / auto quant capture / professional capture mode. View, Batch Capture and Programming capture are included in Professional mode. View Continuously accumulate signal emitted from the membrane and display with time sequence. Batch Capture function is to simulate the X-ray film exposure protocols to provide continuous image capture with different exposure time. Programming capture detects the signal with 10 sets of exposure time with pause function. Circle select interested region and recapture to get better result. Binning function with 1x1, 2x2, 4x4, and 8x8 augment the sensitivity. Interrupt warning stop and warn the user while capturing been disturbed. Auto-save function allows user to export with most common file formats such as PCX, TGA, DFN, PNG, IMG, TIFF, BMP, JPG, GIF, etc. at once. Molecular Weight and Mass Determination, and Spot Density calculation are included.



Blue light sample Tray



Fluorescence image



Fluorescent image

►► Magic Plus Software



Select specific dye



Compare images

►► Auto capture mode

Select the Auto Capture mode system automatic predict the optimal exposure time get perfect result both save time and never lost Any signal, Auto Quant mode same as above the image capture will stop at anyone pixel saturated help operator fast for quantification of protein.



Auto Capture



Auto Quant Capture

►► Professional mode

View and Batch capture for signal cumulate and X-ray film simulation



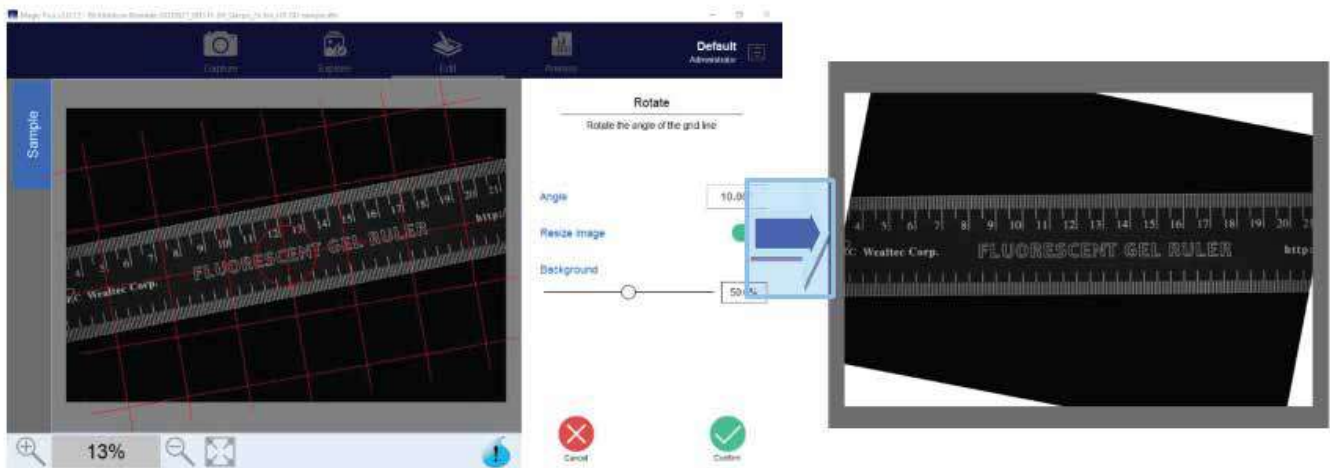
View



Batch Capture

►► Image Rotation

Non-mechanical image rotation capability 0-360 degree enables user to optimize the image with the desired position for professional report export



►► MPIS 3002 supports versatile fluorescent western blot

MPIS 3002 Epi light set includes eight pieces of Hi- power LED covering wavelength from 460nm to NIR (780nm) for all fluorescent dye excitation on western blot application. Operator choose either the dye or the excitation wavelength, the MLX will automatically turn on the LED and drive the Emission filter to correct position by preset program without additional steps.

►► Motorized Filter Wheel

Software controlled eight 67mm filter position motorized filter wheel remains flexibility for chemiluminescent Imaging and adapted various emission filters for fluorescent western blot Imaging

►► Image Analysis Function

Magic Plus software provides powerful tool for user easily compare their images with previous images, enhance the images with the editing tools, and select the best images for quantification analysis

►► Image Edit and Display

Magic plus possess the traceable image enhancement functions which include: color/ brightness/ contrast adjustment, image profiling or blending, background defining, annotations on the image or masked layer, 3D color display, X-axis comparison, smiling gels correction, conversion, interpolate, Deconvolution, Super Resolution, flipping, rotation and distance measurement.



MPIS 3002 blue light for dye



Eight position filter wheel



►► Specification

Model	
Camera depth	16bit
Dynamic Range	>4.0
Operation temperature	0-60°C
Chip size	1"
Resolution	9.1M pixels
communication	Wi-Fi, Ethernet, USB
Binning	1X1,2X2, 4X4, 8X8
Pixel Size	2.4um x 2.4um
Cooling	Peltier, 40°C below ambient
Motorized Lens	F2.0, 24-65mm focal length
Filter Wheel	67mm, eight-position
Internal light source	MPIS 3002 / 460 nm to NIR 780nm
UV-transilluminator	MD-25DK 302nm/365nm
Tans-light Sample Tray	ST-BW20 Blue & White light, 20 x20cm
Sample Tray	White / Black, 25 x 25cm
Magic plus software	Standard
OS system	MS Windows 10
Physical dimensions	425 x 480 x 865 mm (WxDxH)
Weight	30kg
Power	100 – 240V, 50 – 60Hz
Optional	
External Touch Screen	20" LCD Screen with touch panel
Thermal printer	Digital
Laser printer	Color Laser Printer

►► Filter Selection Guide

Ex (nm)	Em (nm)	Commercial fluorescence dye
5700K	550-675	Coomassie Blue, EtBr, SYBR Green, SYBR Gold
470-495	525-530	SYBR Green
455~485	500-555	Blue-excitable fluorophores and stains
515~545	560~600	Green-excitable fluorophores and stains
610~635	680~720	Red- excitable fluorophores and stains
655-680	730-780	Red-excitable fluorophores and stains
745-765	810-850	Near IR-excitable fluorophores and stains

HPLC Servicing, Validation, Trainings and Preventive Maintenance :

HPLC Servicing :HPLC Servicing : We have team of service engineers who can attend to any make of HPLC promptly @the most affordable cost.

Trainings :We also take up preventive Maintenance to reduce downtime of HPLC's Trainings.

AMC's/CMC :AMC's/CMC :We offer user training both in-House and at customer sites on HPLC principles, operations, trouble-shooting.

Validations :Validations :We have protocols for carrying out periodic Validations as per GLP/GMP/USFDA norms.

Instruments :Instruments :We offer instruments/Renting Services Modules like pumps,detector etc. on Rent.



About Analytical Technologies

Analytical Technologies is synonymous for offering technologies for doing analysis and is the Fastest Growing Global Brand having presence in at least 96 countries across the global. Analytical Technologies Limited is an ISO:9001 Certified Company engaged in Designing, Manufacturing, Marketing & providing Services for the Analytical, Chromatography, Spectroscopy, Bio Technology, Bio Medical, Clinical Diagnostics, Material Science & General Laboratory Instrumentation. Analytical Technologies, India has across the Country operations with at least 4 Regional Offices, 6 Branch Offices & Service Centers. Distributors & Channel partners worldwide.

Our Products & Technologies



UV/VIS
Spectro 2080+
Double Beam



Infra FTIR



Optima Gas
Chromatograph
3007



Optima Gas
Chromatograph
2979 Plus



Flash
Chromatograph



Atomic Absorption
Spectrophotometer



Liquid Particle
Counter



Optical Emission
Spectrophotometer



DSC/TGA



Semi Auto Bio
Chemistry Analyzer



HEMA 2062
Hematology
Analyzer



Micro Plate
Reader/Washer



URINOVA 2800
Urine Analyzer



Total Organic
Carbon 3800



Fully Automated
CLIA



NOVA-2100
Chemistry Analyzer



PCR/Gradient PCR/
RTPCR



TOC
Analyzer



Laser Particle
Size Analyzer



Ion Chromatograph



Water purification
system

Regulatory compliances



Corporate Social Responsibility

Analytical Foundation is a nonprofit organization (NGO) found for the purpose of:



Analytical
Foundation

1. Research & Innovation Scientist's awards/QC Professional Award : Quality life is possible by innovation only and the innovation is possible by research only, hence ANALYTICAL FOUNDATION is committed to identify such personalities for their contributions across various field of Science and Technology and awarding them yearly. To participate for award, send us your details of research / testing / publication at Info@analyticalfoundation.org

2. Improving quality of life by offering YOGA Training courses, Work shops/Seminars etc.

3. ANALYTICAL FOUNDATION aims to DETOXYFY human minds,souls and body by means of yoga, Meditation, Ayurveda, Health Care, Awards, Media, Events, Camps etc.



 **Analytical**[®]
Technologies Limited

HPLC Solutions MultipleLabs Analytical Bio-Med Analytical Distributors Analytical Foundation (Trust)

Corporate & Regd. Office:
Analytical House, # E67 & E68,
Ravi Park, Vasna Road, Baroda,
Gujarat 390 015. INDIA

T: +91 265 2253620
+91 265 2252839
+91 265 2252370
F: +91 265 2254395

E: info@hplctechnologies.com
info@multiplelabs.com
info@analyticalgroup.net

W. www.analyticalgroup.net
www.hplctechnologies.com
www.multiplelabs.com

Sales & Support Offices:
across the country :
Distributors & Channel
partners World Wide